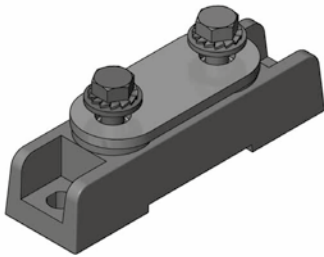


Support insulators for electrical terminals

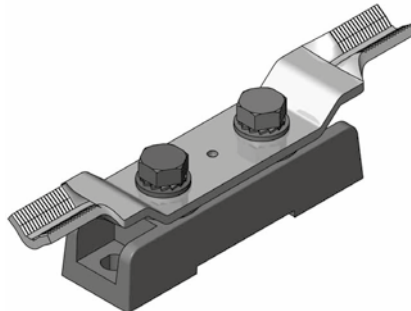
PROFIX PWS

PWS 12 • PWS 10

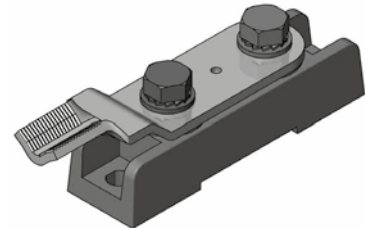
Insulators with the type designation PWS 10 and PWS 12 are designed for the firm fixation and set-up of a conductive connection of solid copper or spun cable conductors in electrical installations with low voltage up to 1 000 V.



Insulator PWS 12 + CUS 1



Insulator PWS 10 + CUS 2



Insulator PWS 10 + CUS 3

Technical data of the product

Support height	28 mm
Weight	143 g +3 %
Operating voltage	1 000 V
Operating temperature	- 40 °C až +130 °C
Internal breakdown voltage	20 kV
External breakdown voltage	8 kV
Screw torque for PWS 12	6 N/m
Screw torque for PWS 10	6 N/m
Flammability rating	UL 94-VO
Hot loop test	960 °C

Product design and use

The body of the support insulator is based on polyester composites reinforced with glass fiber. The insulator is fitted with two recessed nuts with M12 threads in the upper part, and is supplied with the type designation PWS 12, or is fitted with M10 nuts with the type designation PWS 10. The product is fitted with two holes on the edge for fixing it to the structure of the electrical equipment with two M8 screws. The mechanical strength of the support insulator and the possibility of fastening the electrically conductive parts to the device structure at four connection points enable the set-up of a mechanically strong structural node with excellent directional stability. This solution fully

Declaration of Conformity

PROFIX support insulators comply with the requirements: TP 2002103, ČSN EN 60243-1:99, EN 60695-2- 11:0,1. The products are certified by EZÚ Prague. Further information is available at www.prowatt.cz.

replaces the ceramic structural elements used to date. PWS Series insulators are equipped with auxiliary connecting material by the manufacturer, which allows to set up an input or output terminal of the distribution device:

- The connection of rigid or flexible conductors using the joints CUS 1, CUS 2, CUS 3.
- The CUS 2, CUS 3 joints allow the mounting of the „V“ terminal with the possibility of connecting conductors up to 240 mm².
- A direct connection using a KU 50 cable eye with an extended lug.
- A connection of bare conductors using a CUS 1 joint.