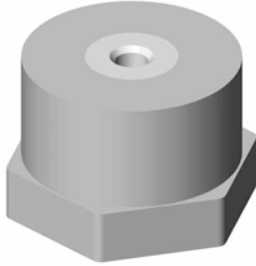


## Support insulators

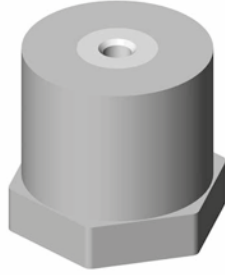
# PROFIX PW

PW 30 • PW 40 • PW 50

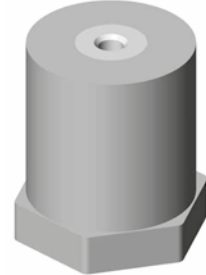
The PROFIX PW support insulators are designed primarily for installation and firm fixation of bus-bar systems, bus-bars, terminal boards and boxes, cable taps, live parts of devices and other electrical equipment.



Insulator PW 30 M10



Insulator PW 40 M10



Insulator PW 50 M10

### Technical data of products

Products marking	PW 30 M8 PW 30 M10	PW 40 M8 PW 40 M10 PW 40 M12	PW 50 M8 PW 50 M10 PW 50 M12
Support height	30 mm	40 mm	50 mm
Weight	90 g – 88 g	120 g – 116 g – 116 g	144 g – 140 g – 140 g
Operating voltage	800 V	1 000 V	1 000 V
Operating temperature	-40 °C to +130 °C	-40 °C to +130 °C	-40 °C to +130 °C
Tensile strength	10 kN	12 kN	14 kN
Bending strength	8 kN	8 kN	5 kN
Tightening torque	3,6 N/m	3,6 N/m	3,6 N/m
Internal breakdown voltage	20 kV	20 kV	30 kV
External breakdown voltage	10 kV	10 kV	20 kV
Flammability rating	UL 94-VO	UL 94-VO	UL 94-VO

### Product design and use

The body of the PROFIX PW support insulator is made of a highly resistant plastic based on polyesters reinforced with glass fiber. Steel dies for fixing screws are pressed into the 40-mm insulator body on opposite sides. The PROFIX PW series support insulators are available as PW 30 with M8 and M10 internal threads, PW 40 with M8, M10 and M12 internal threads, and PW 50 with M8, M10 and M12 internal threads.

Support insulators PROFIX PW are designed primarily for the setting up and installation of electrical equipment and

distribution equipment with low voltage up to 1 000 V. They are used for the installation and firm fixation of bus-bar systems, bus-bars, terminal boards and boxes, cable taps, live parts of devices to the structure of electrical equipment. They are designed for installation in indoor environments with operating temperatures from -40 °C to +130 °C. The properties of the PROFIX PW support insulators allow for a safe set-up of electrical distribution systems with high dynamic short-circuit current loads.

### Declaration of Conformity

DELTA Series bus-bar supports conform to the requirements of technical standards and regulations – TP 2002103, ČSN EN 6060243- 1/99, ČSN EN 60695-2-11/01. The product is certified by EZÚ, Pod lisem 129, 171 02 Prague 8, Czech Republic.

# Support insulators

## PROFIX PW

### System 60 mm (Y)

Strip width in mm	Idyn(kA)10	20	30	40	50	60	70	80	90	100
30		800	800	700	500	Insulators distance (X)				
40		800	800	800	650	500				

### System 100 mm (Y)

Strip width in mm	Idyn(kA)10	20	30	40	50	60	70	80	90	100	
30		800	800	800	600	Insulators distance (X)					
40		1000	1000	1000	800	700					
50		1000	1000	1000	1000	800	600	550			
60		1000	1000	1000	1000	800	700	550	500		
80		1000	1000	1000	1000	800	600	500	480	250	280

### System 150 mm (Y)

Strip width in mm	Idyn(kA)10	20	30	40	50	60	70	80	90	100	
30		800	800	800	750	Insulators distance (X)					
40		1000	1000	1000	800	800					
50		1000	1000	1000	1000	800	800	700			
60		1000	1000	1000	1000	1000	900	800	700		
80		1000	1000	1000	1000	1000	900	800	700	600	500
100		1000	1000	1000	1000	1000	900	800	700	600	500

### System 185 mm (Y)

šířka pásovin v mm	Idyn (kA)10	20	30	40	50	60	70	80	90	100	
30		800	800	800	800	vzdálenost izolátorů (X)					
40		1000	1000	1000	1000	900					
50		1000	1000	1000	1000	1000	900	800			
60		1000	1000	1000	1000	1000	1000	1000	800		
80		1000	1000	1000	1000	1000	1000	1000	800	700	600
100		1000	1000	1000	1000	1000	1000	1000	800	700	600
120		1000	1000	1000	1000	1000	1000	1000	800	700	600

